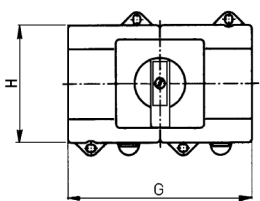
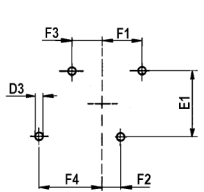


KG Changeover Switches

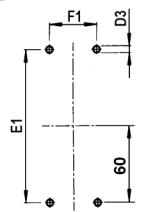
Base Mounting – with door interlock



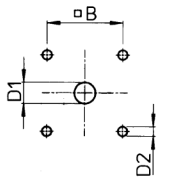
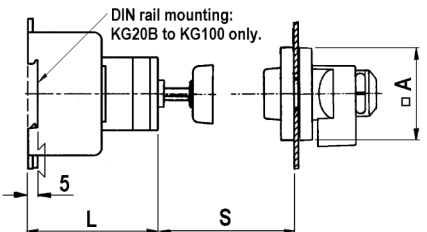
Base Mounting Holes



KG20B-100



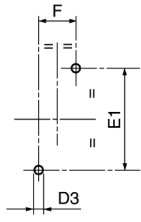
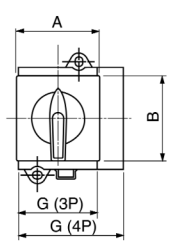
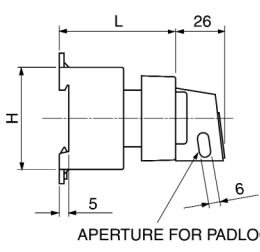
KG127-162



	A	B	D1	D2	D3	E1
KG20B, KG32B	64	48	22	5	5	60
KG41B, KG64B	64	48	22	5	5	70
KG80, KG100	88	48	22	5	6	90
KG127, KG162	88	68	27	6	6.4	99
	F1	F2	F3	F4	F3	F4
			3 Pole	3 Pole	4 Pole	4 Pole
KG20B, KG32B	32	10	10	32	23.5	45.5
KG41B, KG64B	37.5	12.5	12.5	37.5	28.5	53.5
KG80, KG100	47.5	22.5	22.5	47.5	44.5	69.5
KG127, BG162	76	-	-	-	-	-
	G-3 Pole	G-4 Pole	H	L	S	
KG20B, KG32B	84	111	54	66.5	37-125	
KG41B, KG64B	100	132	64	77	35-132	
KG80, KG100	140	184	80	89.2	36-130	
KG127, KG162	224	300	109	93	50-199	

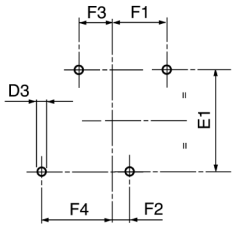
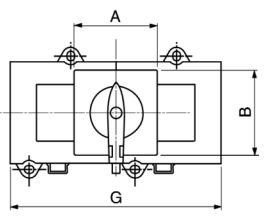
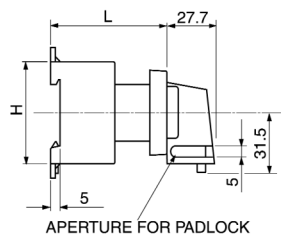
Factory fitted auxiliary contacts are integral with the main switch body – they are not side mounting type.
Shaft position in the body is adjustable.

KG Off - On Switches - For 45 mm Installation Cut-Out



	A	B	D3	E1	F
KG20A, KG32A	43.7	45.4	5	60	22
KG41B, KG64B	52.4	45.4	5	70	25
KG80, KG100	70	45	6	90	25
	G-3 Pole	G-4 Pole	H	L	
KG20A, KG32A	42	55.5	54	61.5	
KG41B, KG64B	50	66	64	61.5	
KG80, KG100	70	92	80	70	

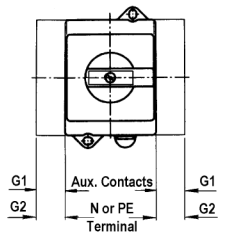
KG Changeover Switches - For 45 mm Installation Cut-Out



	A	B	D3	E1	F1
KG41B, KG64B	105	45.4	5	70	37.5
KG80, KG100	70	45	6	90	47.5
	F2	F3	F4	F3	F4
		2 Pole	2 Pole	4 Pole	4 Pole
KG41B, KG64B	12.5	12.5	37.5	28.5	53.5
KG80, KG100	22.5	22.5	47.5	44.5	69.5
	G-3 Pole	G-4 Pole	H	L	
KG41B, KG64B	100	132	64	67.5	
KG80, KG100	140	184	80	81.2	

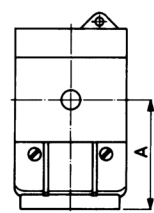
KG Switch Options

Side Mounting modules



	G1	G2
KG20B, KG32B	10	13.5
KG41B, KG64B	11	16
KG80, KG100	11	22

Terminal covers



	A
KG10B	-
KG20B, KG32B	47
KG41B, KG64B	49
KG80, KG100	66