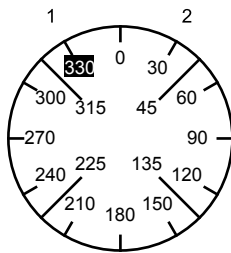
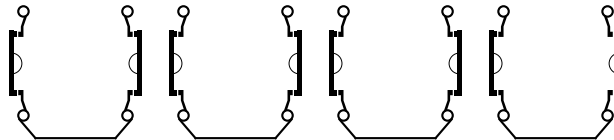


Face Plate



1	3	5	7	9	11	13	15	17	19	21	23
---	---	---	---	---	----	----	----	----	----	----	----



Switching Angle

60

Total switching Angle

60

2	4	6	8	10	12	14	16	18	20	22	24
---	---	---	---	----	----	----	----	----	----	----	----

1	330										
	345										
2	0										
	15										
	30										
	45										
	60										
	75										
	90										
	105										
	120										
	135										
	150										
	165										
	180										
	195										
	210										
	225										
	240										
	255										
	270										
	285										
	300										
	315										

Look		Pcs.	Optional Extras	Jumpers			
Mounting				1 ●	● 3	4 ○	○ 2
Face Plate				5 ●	● 7	8 ○	○ 6
Handle				9 ●	● 11	12 ○	○ 10
Latch. Mech.	E106			13 ●	● 15	16 ○	○ 14
Stop	SOC.E101.03			17 ○	○ 19	20 ○	○ 18
Stop degree				21 ○	○ 23	24 ○	○ 22
No. of Stages	4			25 ○	○ 27	28 ○	○ 26
Master data	0			29 ○	○ 31	32 ○	○ 30
Reference	WINKLER			33 ○	○ 35	36 ○	○ 34
Date	2014-01-14 15:07			37 ○	○ 39	40 ○	○ 38
Modify Date	2014-01-16 14:40			41 ○	○ 43	44 ○	○ 42
Cust. NO.				45 ○	○ 47	48 ○	○ 46
Company							
Version	108						