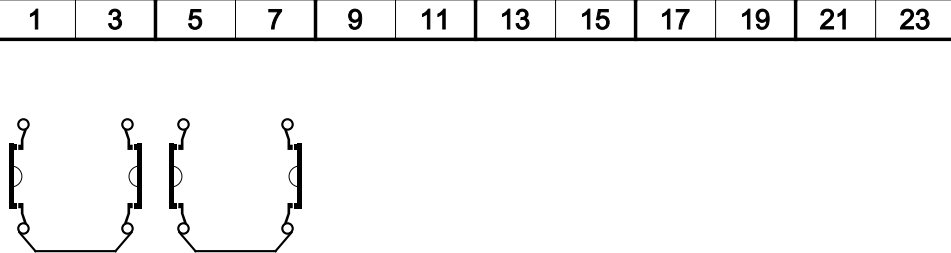
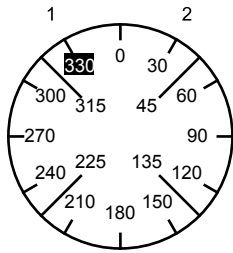


Face Plate



Switching Angle
 Total switching Angle

2 4 6 8 10 12 14 16 18 20 22 24

1	330	█		█																
	345																			
	0																			
	15																			
2	30		█			█														
	45																			
	60																			
	75																			
	90																			
	105																			
	120																			
	135																			
	150																			
	165																			
	180																			
	195																			
	210																			
	225																			
	240																			
	255																			
	270																			
	285																			
	300																			
	315																			

Look		Pcs.	Optional Extras	Jumpers			
Mounting				1 ●	● 3	4 ○ — ● 2	
Face Plate				5 ●	● 7	8 ○ — ● 6	
Handle				9 ○	○ 11	12 ○	○ 10
Latch. Mech.	E106			13 ○	○ 15	16 ○	○ 14
Stop	SOC.E101.03			17 ○	○ 19	20 ○	○ 18
Stop degree				21 ○	○ 23	24 ○	○ 22
No. of Stages	2			25 ○	○ 27	28 ○	○ 26
Master data	0			29 ○	○ 31	32 ○	○ 30
Reference	WINKLER			33 ○	○ 35	36 ○	○ 34
Date	2014-01-14 15:07			37 ○	○ 39	40 ○	○ 38
Modify Date	2014-01-16 14:57			41 ○	○ 43	44 ○	○ 42
Cust. NO.				45 ○	○ 47	48 ○	○ 46
Company							
Version	107						