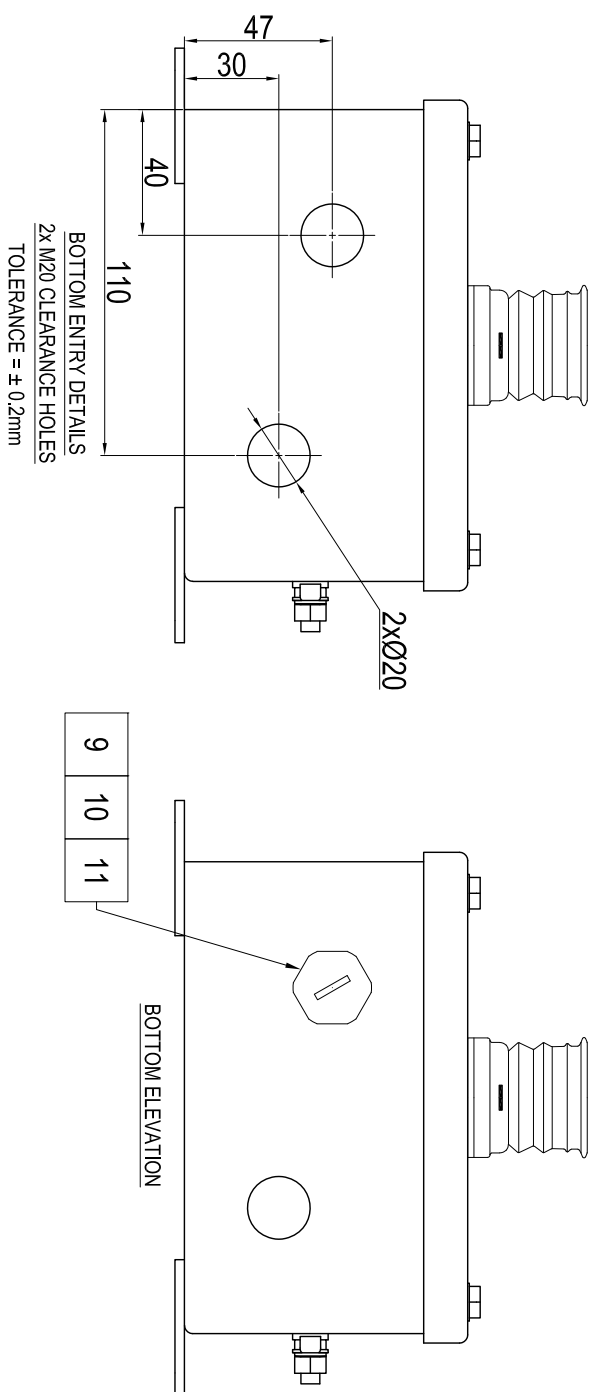
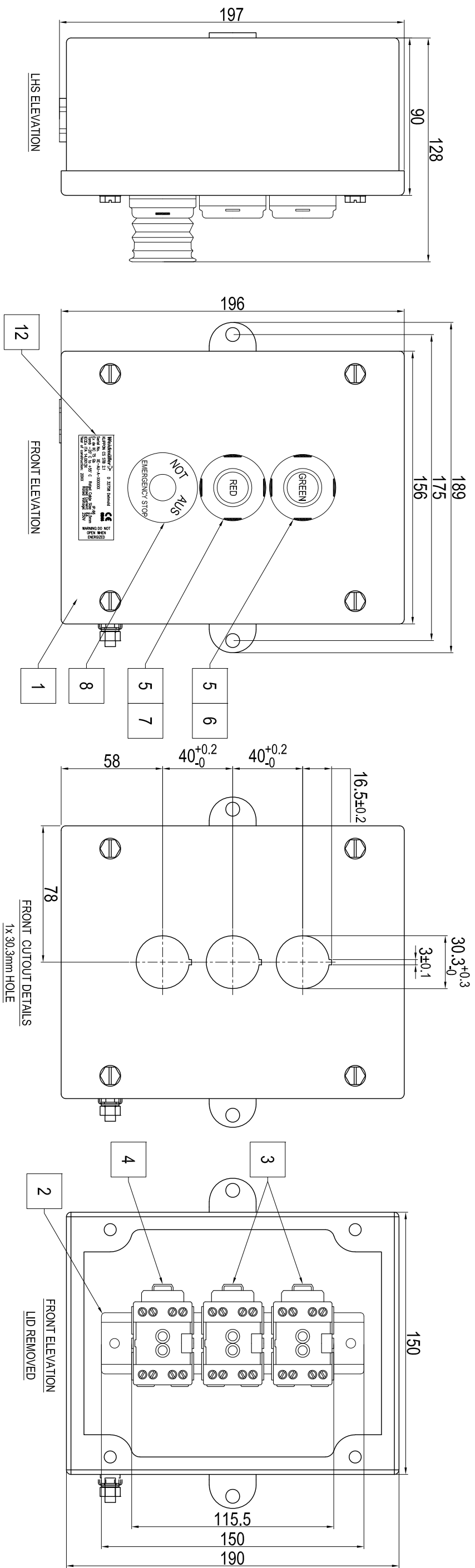


NOTES:

1. TERMINAL RAIL WILL NEED TO BE NOTCHED TO FIX THE CONTACT BLOCK ON THE RAIL.



ALL DIMENSIONS ARE IN MILLIMETRES UNLESS OTHERWISE STATED

ITEM	PART No.	QTY	DESCRIPTION
12	-	1	ALUMINIUM FOIL CERTIFICATION LABEL
11	1736240000	1	GWDR M20-NP SEALING WASHER
10	1736930000	1	SKMU M20 K BLACK
9	1737080000	1	VP M20-EXE SW
8	7940129467	1	CZ4000-P3E EMERGENCY STOP BUTTON - PULL
7	7940129471	1	P000-21 RED BUTTON TAB
6	7940129470	1	P000-01 GREEN BUTTON TAB
5	7940129469	2	CZ4000-P1 MOMENTARY PUSHBUTTON
4	7940129483	1	CZ0201-61SL SWITCH DIN-RAIL MOUNTED 2x N/C CONTACTS
3	4000003904	2	CZ0201-60SL SWITCH DIN-RAIL MOUNTED 1x N/O & 1x N/C CONTACTS
2	1747350000	1	RAIL TS 35 S/S (150mm LENGTH)
1	1002730000	1	KLIPPON STB 2.1 SS

Weidmüller



WEIDMÜLLER PTY. LTD.
 ABN 98 000938 590
 4/3 HUNTINGWOOD DRIVE, HUNTINGWOOD NSW 2148
 P.O. BOX 6944, BLACKTOWN NSW 2148 AUSTRALIA
 TELEPHONE: +61 (02) 9671 9999 FACSIMILE: +61 (02) 9671 9911
 EMAIL: info@weidmuller.com.au

REV.	DATE	DRAWN	CHECKED	ISSUED FOR APPROVAL	REVISION
A	23/05/23	A.P.	S.M		
1					

DRAWN	DATE	CHECKED	APPROVED	SCALE	TITLE	PART No.	QTY	DESCRIPTION	DRAWING No.	REVISION
A.PASALODOS	23/05/2023	S.MORT		NIS	WEIDMÜLLER AUSTRALIA PTY LTD START STOP & E-STOP EX DE STB GENERAL ARRANGEMENT	8000117790			8000117790	
										A

CAD FILE No. 8000117790
 SHEET 1 OF 1
 A3