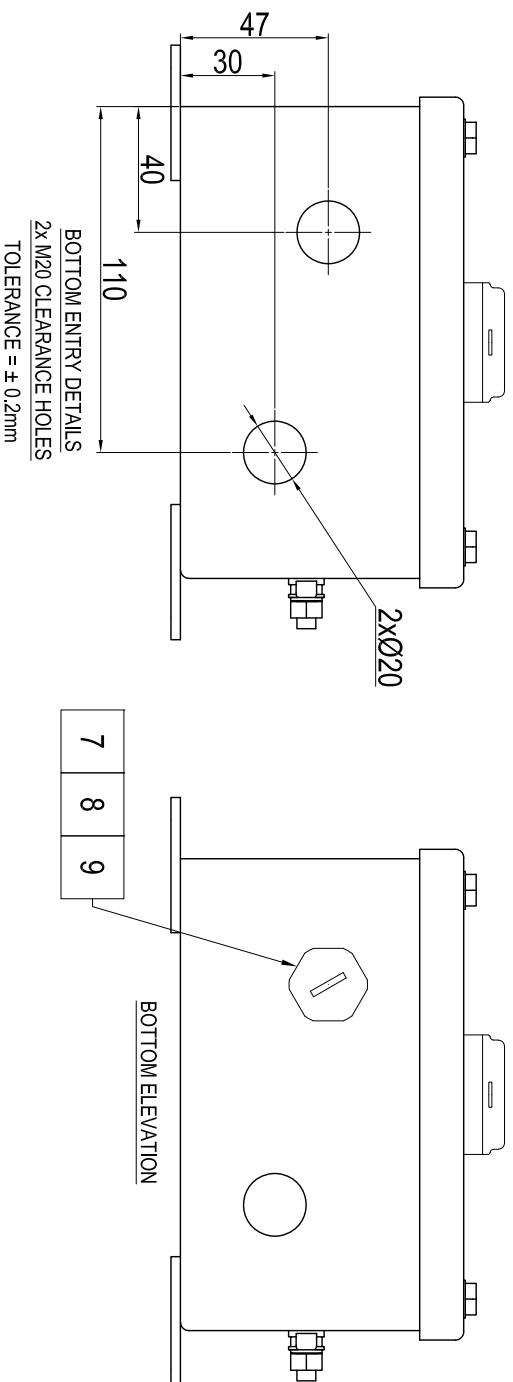
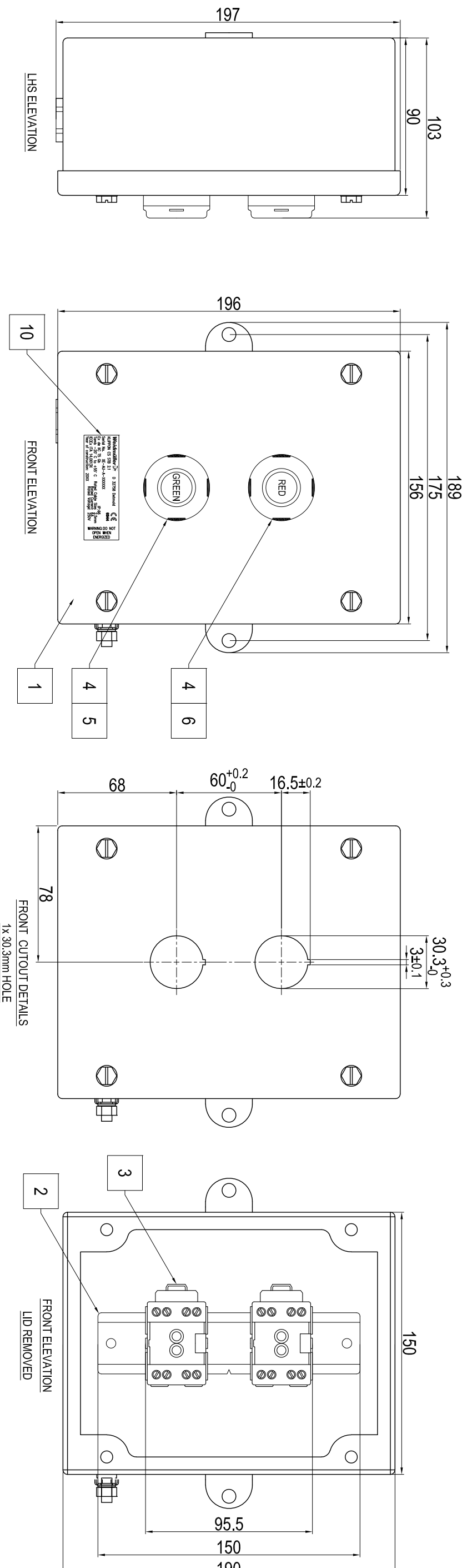


NOTES:

1. TERMINAL RAIL WILL NEED TO BE NOTCHED TO FIX THE CONTACT BLOCK ON THE RAIL.



ALL DIMENSIONS ARE IN MILLIMETRES UNLESS OTHERWISE STATED

ITEM	PART No.	QTY	DESCRIPTION
10	-	1	ALUMINIUM FOIL CERTIFICATION LABEL
9	1736240000	1	GWDR M20-NP SEALING WASHER
8	1736930000	1	SKMU M20 K BLACK
7	1737080000	1	VP M20-EXE SW
6	7940129471	1	P000-21 RED BUTTON TAB
5	7940129470	1	P000-01 GREEN BUTTON TAB
4	7940129469	2	CZ4000-P1 MOMENTARY PUSHBUTTON
3	4000003904	2	CZ0201-80SL SWITCH DIN-RAIL MOUNTED 1x N/O & 1x N/C CONTACTS
2	1747350000	1	RAIL TS 35 S/S (150mm LENGTH)
1	1002730000	1	KLIPPON STB 2.1 SS

REV.	DATE	DRAWN	CHECKED	ISSUED FOR APPROVAL	REVISION
A	23/05/23	A.P.	S.M		
1					

**Weidmüller**

WEIDMÜLLER PTY. LTD.  
 ABN 98 000938 590  
 4/3 HUNTINGWOOD DRIVE, HUNTINGWOOD NSW 2148  
 P.O. BOX 6944, BLACKTOWN NSW 2148 AUSTRALIA  
 TELEPHONE: +61 (02) 9671 9999 FACSIMILE: +61 (02) 9671 9911  
 EMAIL: info@weidmuller.com.au

DRAWN	DATE	CHECKED	APPROVED	SCALE	TITLE	PART No.	QTY	DESCRIPTION	DRAWING No.	REVISION
A.PASALODOS	23/05/2023	S.MORT		NIS	WEIDMULLER AUSTRALIA PTY LTD START STOP EX DE STB 2.1 GENERAL ARRANGEMENT	8000117789			8000117789	A