

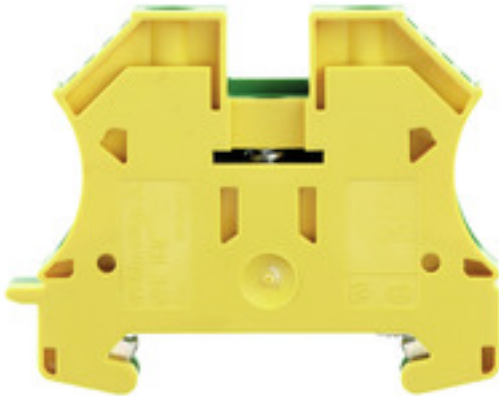
**WPE 16N****Weidmüller Interface GmbH & Co. KG**

Klingenbergstraße 26

D-32758 Detmold

Germany

www.weidmueller.com

**Product image****Klippon® Connect with clamping yoke Technology**

The high reliability and variety of designs of the terminal blocks with clamping yoke connections make planning easier and optimises operational safety. Klippon® Connect provides a proven response to a range of different requirements.

**General ordering data**

|            |  |
|------------|--|
| Version    | PE terminal, Screw connection, 16 mm <sup>2</sup> , 1920 A (16 mm <sup>2</sup> ), Green/yellow |
| Order No.  | <a href="#">1019100000</a>   |
| Type       | WPE 16N  |
| GTIN (EAN) | 4008190273248  |
| Qty.       | 50 pc(s).  |

Creation date 03 February 2022 03:37:09 CET

Catalogue status 28.01.2022 / We reserve the right to make technical changes.

## WPE 16N

**Weidmüller Interface GmbH & Co. KG**

Klingenbergstraße 26

D-32758 Detmold

Germany

www.weidmueller.com

## Technical data

### Dimensions and weights

|                          |            |                |            |
|--------------------------|------------|----------------|------------|
| Depth                    | 46.5 mm    | Depth (inches) | 1.831 inch |
| Depth including DIN rail | 47 mm      | Height         | 56 mm      |
| Height (inches)          | 2.205 inch | Width          | 12 mm      |
| Width (inches)           | 0.472 inch | Net weight     | 33.98 g    |

### Temperatures

|                                  |                |                                  |        |
|----------------------------------|----------------|----------------------------------|--------|
| Storage temperature              | -25 °C...55 °C | Continuous operating temp., min. | -50 °C |
| Continuous operating temp., max. | 130            |                                  |        |

### Material data

|                           |       |        |              |
|---------------------------|-------|--------|--------------|
| Material                  | Wemid | Colour | Green/yellow |
| UL 94 flammability rating | V-0   |        |              |

### System specifications

|                                     |   |                               |     |
|-------------------------------------|---|-------------------------------|-----|
| Version                             | Screw connection, With PE connection, in closed state | End cover plate required      | No  |
| Number of potentials                | 1   | Number of levels              | 1   |
| Number of clamping points per level | 2   | Number of potentials per tier | 1   |
| Levels cross-connected internally   | No  | PE connection                 | Yes |
| Rail                                | TS 35   | N-function                    | No  |
| PE function                         | Yes   | PEN function                  | Yes |

### Additional technical data

|                          |                  |                             |                 |
|--------------------------|------------------|-----------------------------|-----------------|
| Explosion-tested version | No               | Installation advice         | when screwed in |
| Interlock                | for screw fixing | Number of similar terminals | 1               |
| Open sides               | closed           | Type of mounting            | when screwed in |

### CSA rating data

|                               |                |                               |       |
|-------------------------------|----------------|-------------------------------|-------|
| Certificate No. (CSA)         | 200039-1057876 | Wire cross section max. (CSA) | 6 AWG |
| Wire cross section min. (CSA) | 14 AWG         |                               |       |

## WPE 16N

Weidmüller Interface GmbH &amp; Co. KG

Klingenbergstraße 26

D-32758 Detmold

Germany

www.weidmueller.com

## Technical data

## Conductors for clamping (rated connection)

|   |                     |   |                     |
|---|---------------------|---|---------------------|
| Blade size  | 1.0 x 5.5 mm        | Clamping range, max.  | 25 mm <sup>2</sup>  |
| Clamping range, min.  | 1.5 mm <sup>2</sup> | Clamping screw  | M 4                 |
| Connection cross-section, stranded, max.  | 25 mm <sup>2</sup>  | Connection cross-section, stranded, min.  | 1.5 mm <sup>2</sup> |
| Connection direction  | on side             | Gauge to IEC 60947-1  | B7                  |
| Number of connections   | 2                   | Stripping length  | 12 mm               |
| Tightening torque, max.   | 2.4 Nm              | Tightening torque, min.   | 1.2 Nm              |
| Type of connection  | Screw connection    | Wire connection cross section AWG, max.   | AWG 6               |
| Wire connection cross section AWG, min.   | AWG 14              | Wire connection cross section, finely stranded, max.                                    | 16 mm <sup>2</sup>  |
| Wire connection cross section, finely stranded, min.                                    | 1.5 mm <sup>2</sup> | Wire connection cross-section, finely stranded with wire-end ferrules DIN 46228/1, max. | 16 mm <sup>2</sup>  |
| Wire connection cross-section, finely stranded with wire-end ferrules DIN 46228/1, min. | 1.5 mm <sup>2</sup> | Wire connection cross-section, finely stranded with wire-end ferrules DIN 46228/4, max. | 16 mm <sup>2</sup>  |
| Wire connection cross-section, finely stranded with wire-end ferrules DIN 46228/4, min. | 4 mm <sup>2</sup>   | Wire connection cross-section, solid core, max.   | 16 mm <sup>2</sup>  |
| Wire connection cross-section, solid core, min.   | 1.5 mm <sup>2</sup> |   |                     |

## Dimensions

|              |       |
|--------------|-------|
| TS 35 offset | 32 mm |
|--------------|-------|

## General

|   |                 |   |       |
|---|-----------------|---|-------|
| Installation advice                     | when screwed in | Rail                                    | TS 35 |
| Standards                               | IEC 60947-7-2   | Wire connection cross section AWG, max. | AWG 6 |
| Wire connection cross section AWG, min. | AWG 14          |   |       |

## PE rating data

|  |                              |                              |     |
|--|------------------------------|------------------------------|-----|
| Rated short-time current                 | 1920 A (16 mm <sup>2</sup> ) | Centre screw on PE terminals | M 3 |
| Tightening torque range for fixing screw | 0.5...1.0 Nm                 | PEN function                 | Yes |

## Rating data

|  |                    |  |         |
|--|--------------------|--|---------|
| Rated cross-section                                  | 16 mm <sup>2</sup> | Rated voltage to adjoining terminal          | 400 V   |
| Standards  | IEC 60947-7-2      | Volume resistance according to IEC 60947-7-x | 0.42 mΩ |
| Rated impulse withstand voltage to adjacent terminal | 6 kV               | Power loss in accordance with IEC 60947-7-x  | 2.43 W  |
| Pollution severity                                   | 3                  |  |         |

## UL rating data

|   |        |   |       |
|---|--------|---|-------|
| Certificate No. (UR)                    | E60693 | Conductor size Factory wiring max. (UR) | 6 AWG |
| Conductor size Factory wiring min. (UR) | 14 AWG | Conductor size Field wiring max. (UR)   | 6 AWG |
| Conductor size Field wiring min. (UR)   | 14 AWG |   |       |

## WPE 16N

Weidmüller Interface GmbH &amp; Co. KG

Klingenbergstraße 26

D-32758 Detmold

Germany

www.weidmueller.com

## Technical data

## Classifications

|             |             |             |             |
|-------------|-------------|-------------|-------------|
| ETIM 6.0    | EC000901    | ETIM 7.0    | EC000901    |
| ETIM 8.0    | EC000901    | ECLASS 9.0  | 27-14-11-41 |
| ECLASS 9.1  | 27-14-11-41 | ECLASS 10.0 | 27-14-11-41 |
| ECLASS 11.0 | 27-14-11-41 |             |             |

## Approvals

Approvals



|                       |         |
|-----------------------|---------|
| ROHS                  | Conform |
| UL File Number Search | E60693  |

## Downloads

|   |   |
|---|---|
| Approval/Certificate/Document of Conformity | <a href="#">EAC certificate</a><br><a href="#">CE Declaration of Conformity</a><br><a href="#">CE Declaration of Conformity all terminals</a> |
| Engineering Data                            | <a href="#">CAD data – STEP</a>   |
| Engineering Data                            | <a href="#">EPLAN, WSCAD, Zuken E3.S</a>  |
| User Documentation                          | <a href="#">StorageConditionsTerminalBlocks</a><br><a href="#">Instruction</a>  |
| Catalogues                                  | <a href="#">Catalogues in PDF-format</a>  |
| Brochures                                   |   |

**Data sheet**

**WPE 16N**

**Weidmüller Interface GmbH & Co. KG**  
Klingenbergstraße 26  
D-32758 Detmold  
Germany

[www.weidmueller.com](http://www.weidmueller.com)

**Drawings**

