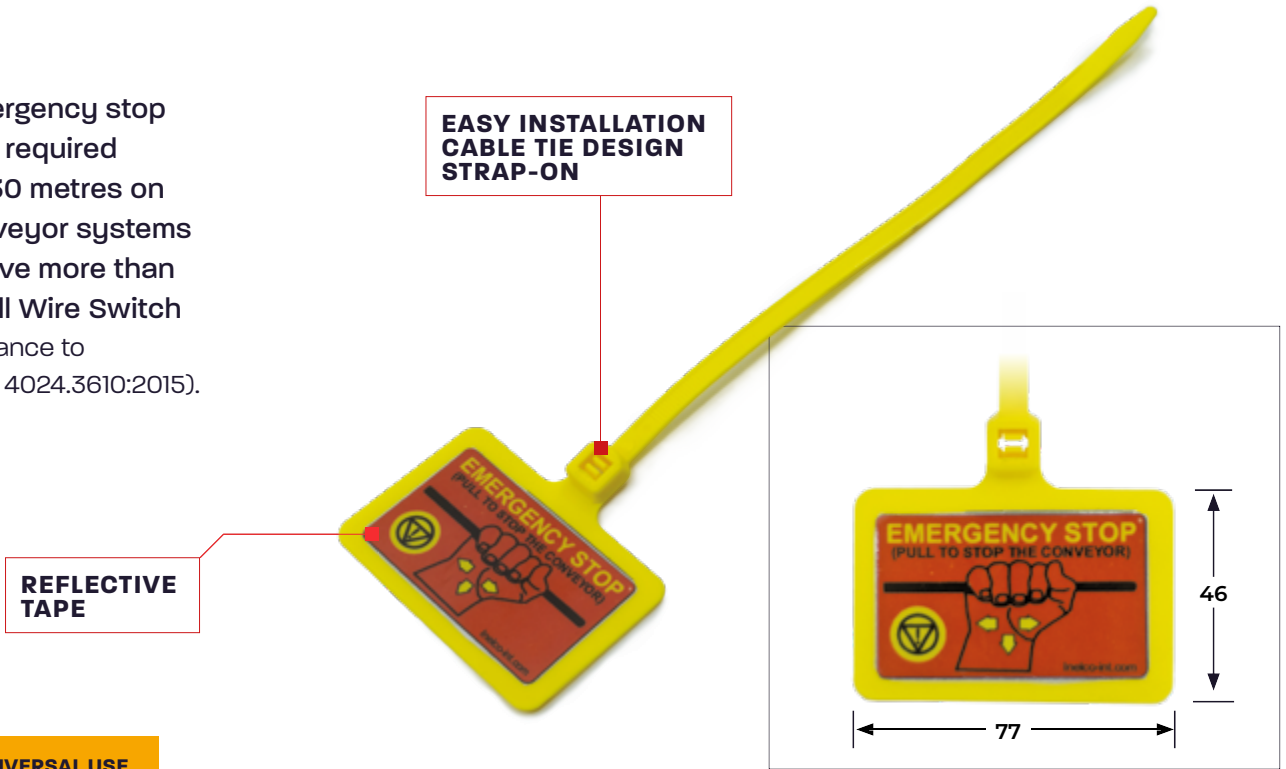


Emergency Stop Label

An emergency stop label is required every 30 metres on all conveyor systems that have more than one Pull Wire Switch (Compliance to AS/NZS 4024.3610:2015).

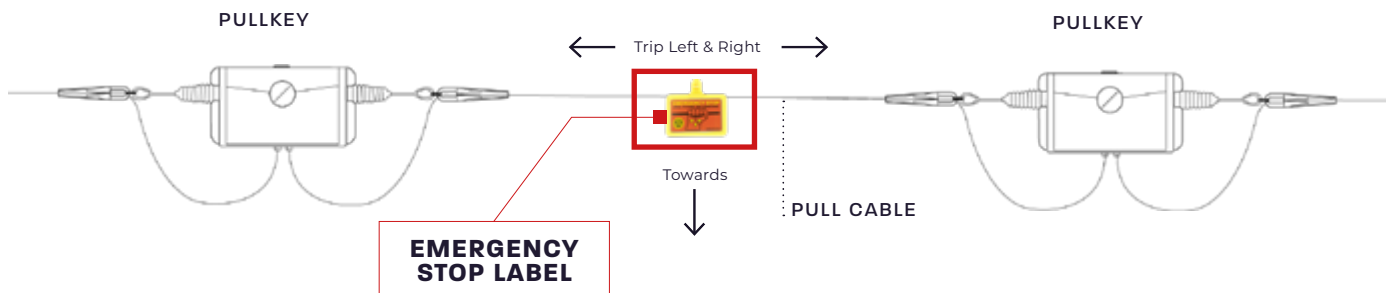


FOR UNIVERSAL USE

TECHNICAL SPECS & ORDERING DATA


Product Type	Part No.	Feature
Emergency Stop Label	SSCE-LAB-ES	Reflective UV Stable

RECOMMENDED INSTALLATION



**PULL WIRE SWITCH
ESSENTIALS SUMMARY**

PRODUCT SPECIFIC*




Slack Wire Spring Tensioning Kit

UNIVERSAL*




Steel Wire Rope
Pull Wire

PRODUCT SPECIFIC*



Black Line Cable
Monitoring Control Cable

UNIVERSAL*



Pigtail Quick Clip
Cable & Pull Wire support

UNIVERSAL*



Pigtails 1 Turn
Cable & Pull Wire support

UNIVERSAL*



Pigtail 1.5 Turn
Cable & Pull Wire support

UNIVERSAL*



Emergency Stop Label
On Pull Wire Rope and Monitoring Cable

PRODUCT SPECIFIC*



Canopy
Additional mechanical protection for Pull Trip Type Pull Wire Switch

UNIVERSAL*



Wedge Clamp
Cable support for Pull Trip Type Pull Wire Switch

* Universal: The essential product is universal to other systems including Safe-T-Pull and NHP systems.
 ^ Product Specific: To be used with Smart Series product range only.