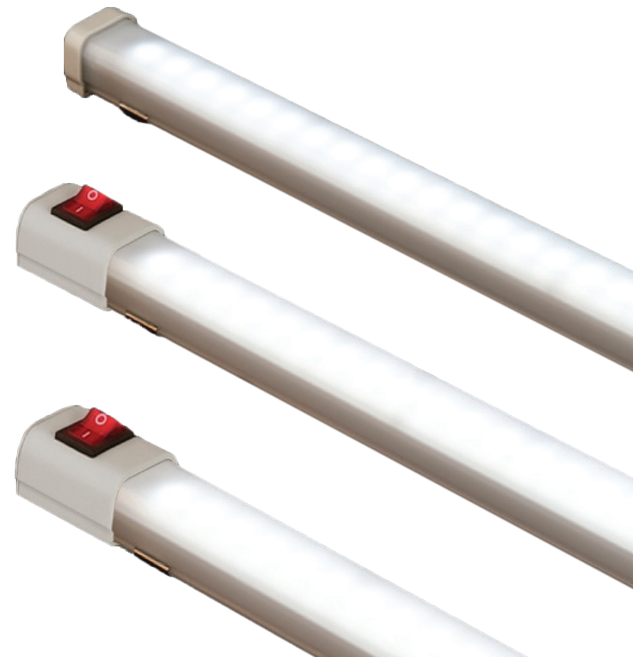


QEL / QELT / QELS / QELTS LED Light Bars for Distribution Panel

COMMON SPECIFICATIONS

- Wide, direct light distribution for high illumination in distribution panels
- Three options for operation:
 - power line threading type
 - terminal box equipped type
 - on-off switch equipped type
- LED direct AC connect system, no other power devices required
- Adopts constant current circuit for stable illumination in unstable power
- Four different product lengths available (200/300/400/500mm) for each condition
- Removable mount bracket that adjusts mount distance
- Customise the product with a M12 connect if requested
- Certificates: CE Compliant, KC



QEL
External Power Line



QELT
Terminal Box Equipped



QELS
External Power Line,
Switch Equipped



QELTS
Terminal Box Equipped,
Switch Equipped

GET IN TOUCH


1300 881 876 sales@pacificautomation.com.au
pacificautomation.com.au



OPTICS SPECIFICATIONS

MODEL	QEL-200 / QELT-200 QELS-200 / QELTS-200	QEL-300 / QELT-300 QELS-300 / QELTS-300	QEL-400 / QELT-400 QELS-400 / QELTS-400	QEL-500 / QELT-500 QELS-500 / QELTS-500	
Lens color	Translucent	Translucent	Translucent	Translucent	
Light color	Cool daylight				
Color temperature	6,000 - 7,000K				
Luminous flux	DC	254lm	383lm	509lm	606lm
	AC	268lm	384lm	479lm	575lm
Efficacy (lm/W)	DC	93Lux	105Lux	165Lux	206Lux
	AC	77Lux	100Lux	145Lux	188Lux

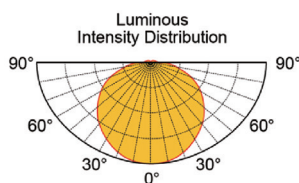
SPECIFICATIONS

MODEL	QEL-200 / QELT-200 QELS-200 / QELTS-200	QEL-300 / QELT-300 QELS-300 / QELTS-300	QEL-400 / QELT-400 QELS-400 / QELTS-400	QEL-500 / QELT-500 QELS-500 / QELTS-500
Voltage	DC24V	DC24V	DC24V	DC24V
	AC110V / AC220V	AC110V / AC220V	AC110V / AC220V	AC110V / AC220V
Range for operation voltage	DC21.5V-26.5V / AC98V-121V / AC198V-245V			
Power consumption	3.5W	5W	7W	9W
	3.0W / 3.5W	3.5W / 5.0W	4.5W / 6.5W	5W / 8.5W
Insulation resistance	Min. 100MΩ (500V DC mega ohm meter)			
Withstanding voltage	DC: 500V AC, 60Hz, 1 minute / AC: 1,500V AC, 60Hz, 1minute			
Operating temperature	-30°C to +50°C			
Protection rating	Non waterproof			
Materials	Lens: PC, Side cover: ABS, Bracket: STS201			
Certificate	DC24V/AC220V only  AC220V only (QEL/QELS)			
Weight(Approx.)	0.08kg	0.10kg	0.13kg	0.15kg
	0.10kg	0.12kg	0.15kg	0.17kg

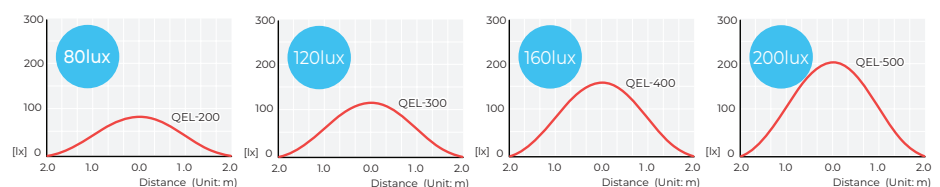


LIGHT DISTRIBUTION & ILLUMINATION

Distribution Curve



Illumination Feature



MOUNTING STRUCTURE



- Adopts removable mounting bracket and sliding structure, adjustable mounting distance.
- Standard bracket :
STS201 (2pcs included)



- Cable end M12 connector attached type

Customized Cable end M12 connector attached type available. (QEL, QELS Only)

GET IN TOUCH

1300 881 876 sales@pacificautomation.com.au
pacificautomation.com.au





TECHNICAL DIAGRAM

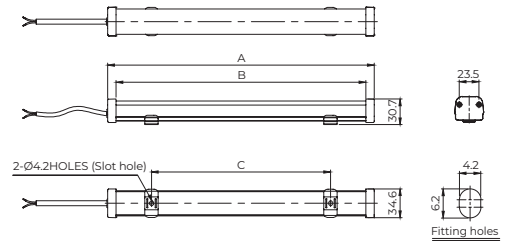
QEL (Standard type)

External powerline:

DC TYPE – UL2464 AWG22 (0.3sq×2C) 450mm

AC TYPE – VCTFK (0.75sq×2C) 450mm

Model	A	B	C
QEL-200	220	200	16-170
QEL-300	320	300	16-270
QEL-400	420	400	16-370
QEL-500	520	500	16-470



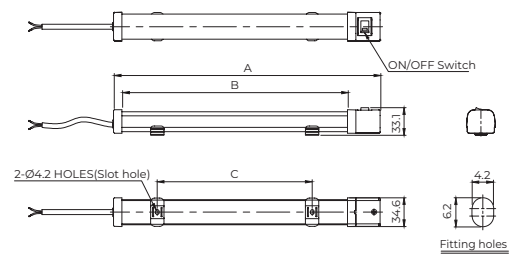
QELS (Built-in on/off switch type)

External powerline:

DC TYPE - UL2464 AWG22 (0.3sq×2C) 450mm

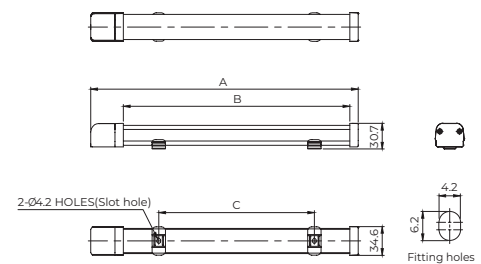
AC TYPE – VCTFK (0.75sq×2C) 450mm

Model	A	B	C
QELS-200	249	200	16-170
QELS-300	349	300	16-270
QELS-400	449	400	16-370
QELS-500	549	500	16-470



QELT (Built-in terminal type)

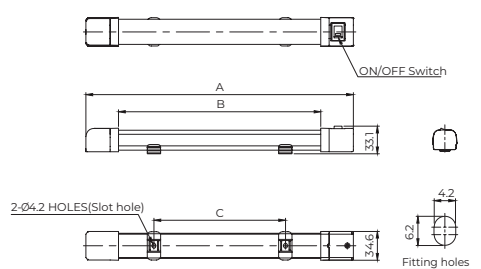
Model	A	B	C
QELT-200	249	200	16-170
QELT-300	349	300	16-270
QELT-400	449	400	16-370
QELT-500	549	500	16-470



QELTS (Built-in on/off switch and terminal type)

External power lines are NOT provided in case of QELT and QELTS models

Model	A	B	C
QELTS-200	278	200	16-170
QELTS-300	378	300	16-270
QELTS-400	478	400	16-370
QELTS-500	578	500	16-470



ORDERING SPECIFICATION

QEL

MODEL NUMBER

- QEL : External power line
- QELT : Terminal box equipped
- QELS : External power line, Switch equipped
- QELTS : Terminal box, Switch equipped

300

PRODUCT LENGTH

- 200 : 200mm
- 300 : 300mm
- 400 : 400mm
- 500 : 500mm

220

VOLTAGE

- 24-DC24V
- 110-AC110V
- 220-AC220V

GET IN TOUCH

1300 881 876 sales@pacificautomation.com.au
pacificautomation.com.au

