

# FLS

## SERIES

### Datasheet

- EFFICIENT
- POWERFUL
- SAFE

## Technical Specifications

### FLS-30

Wattage	30w
Lumen	3,600lm
Weight	1.2kg

### FLS-100

Wattage	100w
Lumens	12,000lm
Weight	1.6kg

### FLS-150

Wattage	150w
Lumens	18,000lm
Weight	2.5kg

### FLS-200

Wattage	200w
Lumens	24,000lm
Weight	4.2kg



> 50,000 HRS (L70)



IP66 RATING



IK07 RATING



WARRANTY

## Key features

- Well designed fitting, suited for exterior flood lighting
- Highly energy efficient & cost effective
- Quality Nichia LED Chip
- Advanced Graphene Technology
- High light transmittance & anti-aging tempered glass cover

## Applications

- Sports lighting
- Area lighting
- Security lighting
- Facade lighting

## FLS Specification

### Colour Temperature

5000K Standard

### CRI

75

### Input Voltage

AC100-240V/  
AC120V-277V

### Power Factor

>0.99

### Thermal Management

YES

### Body Composition

ADC12 Aluminium

### Lens Composition

Tempered Glass

### Temperature Range

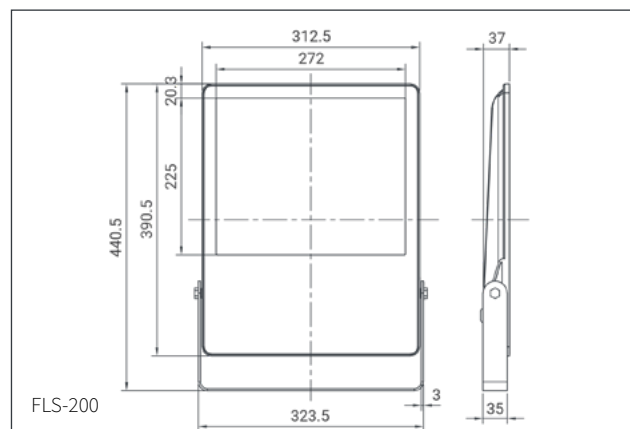
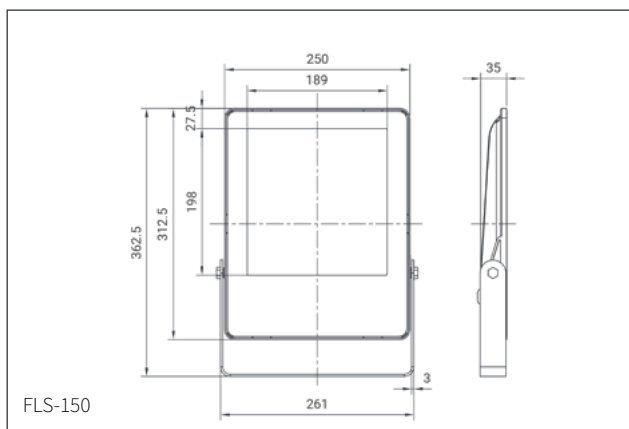
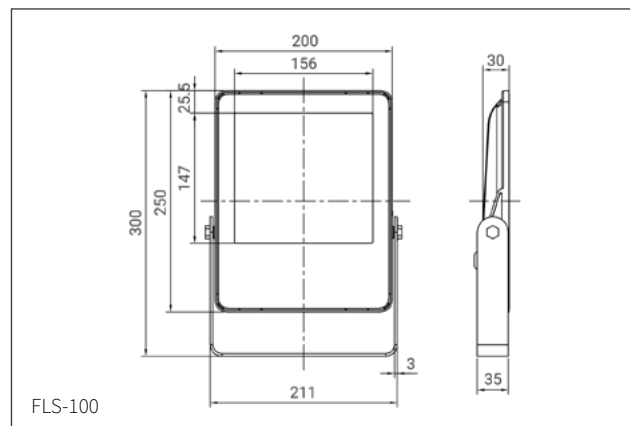
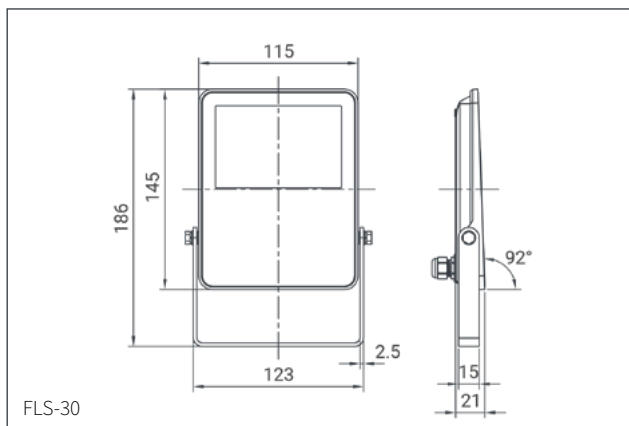
-40°C ~ +40°C

### Cable

FLS-30: 1m flex and plug  
FLS-100/150/200:  
1m flex, no plug

\*3000K or 4000K Available On Request

## Dimensions

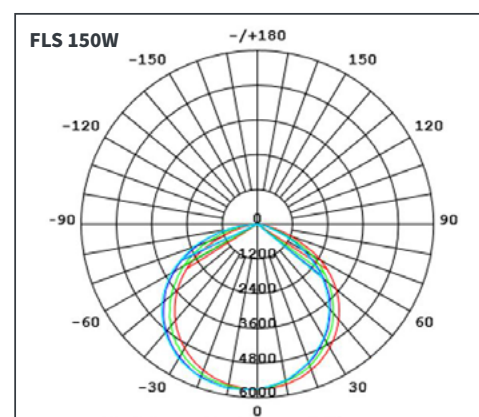


## Ordering Matrix

**FLS** - **150** - **120**  
Series Wattage Beam angle

Series	Wattage	Beam Angle
FLS	30	120°
FLS	100	120°
FLS	150	120°
FLS	200	120°

## Light Distribution



\* Specifications subject to change without notice.