



CA10

Type Size: S0

Classification Contact: Rigid contact bridge

Classification Contact Mat: Silver

Classification Terminal: Screw terminal

Sample image

IEC 60947-3 EN 60947-3, VDE 0660 Teil 107

Rated insulation voltage U_i

Voltage (V)	AC / DC
690	AC / DC

Rated impulse withstand voltage U_{imp}

Voltage (kV)	Overtoltage category	Pollution degree	Supply system	Function
6	III	3	Valid for lines with grounded common neutral termination	switch
4	III	3	Valid for lines with grounded common neutral termination	Switch disconnecter

Rated uninterrupted current I_u /Ith

Current (A)	Ambient temperature (°C)	Peak temperature (°C)	additional requirements
20	55	60	Ambient temperature +55°C during 24 hours with peaks up to +60°C

Conventional enclosed thermal current I_{the}

Current (A)	Ambient temperature (°C)	Peak temperature (°C)	Additional requirements	No. of stages (from - to)	Mounting	Mounting size
20	35	40	Ambient temperature +35°C during 24 hours with peaks up to +40°C	--	--	--

Rated operational current I_e

Utilization category	Voltage (V)	Current (A)
AC-15	220 - 240	6
AC-15	380 - 440	4
AC-20A	690	20
AC-21A	20 - 690	20
AC-22A	220 - 500	20
AC-22A	660 - 690	20

Rated operational power

Utilization category	Voltage (V)	No. of phases	No. of poles	Power (kW)
AC-6b	380 - 400	3	3	--
AC-6b	220 - 230	1	2	--
AC-2	220 - 240	3	3	4
AC-2	380 - 440	3	3	7,50
AC-2	500 - 500	3	3	10
AC-2	660 - 690	3	3	10
AC-3	220 - 240	3	3	3
AC-3	380 - 440	3	3	5,50
AC-3	500 - 500	3	3	5,50
AC-3	660 - 690	3	3	5,50
AC-3	110 - 120	1	2	0,60
AC-3	220 - 240	1	2	2,20
AC-3	380 - 440	1	2	3
AC-4	220 - 240	3	3	0,55
AC-4	380 - 440	3	3	1,50
AC-4	500 - 500	3	3	1,50
AC-4	660 - 690	3	3	1,50
AC-4	110 - 120	1	2	0,30
AC-4	220 - 240	1	2	0,75
AC-4	380 - 440	1	2	1,50

Rated operational power				
Utilization category	Voltage (V)	No. of phases	No. of poles	Power (kW)
AC-23A	220 - 240	3	3	3,70
AC-23A	380 - 440	3	3	7,50
AC-23A	500 - 500	3	3	7,50
AC-23A	660 - 690	3	3	7,50
AC-23A	110 - 120	1	2	0,75
AC-23A	220 - 240	1	2	2,50
AC-23A	380 - 440	1	2	3,70

Max Fuse Rating IEC		
Fuse characteristic	Numb Fuses	Current (A)
gG	1	25

UL60947-4-1 , UL508

Rated insulation voltage Ui		
Voltage (V)	AC / DC	
300	AC	

Rated thermal current			
Current (A)	Ambient temperature (°C)	Additional Text	
20	0 - 40	-	

CSA

Rated insulation voltage Ui		
Voltage (V)	AC / DC	
300	AC	

Rated thermal current			
Current (A)	Ambient temperature (°C)	Additional Text	
20	0 - 40	-	

GENERAL TECHNICAL INFORMATION

Tightening torque of screws		
tightening torque (Nm)	tightening torque (lb-in)	
0,60	5	

Rated short-time withstand current Icw		
Time (s)	Current (A)	
1	140	

Size of conductor					
composition of conductor	Min. / Max. value	No. of conductor per terminal	Cross section (mm ²) or (AWG/kcmil)	Material of the wire	
solid wire	Min.	1	0.5mm ²	Copper	
solid wire	Min.	2	0.5mm ²	Copper	
flexible wire	Min.	1	0.75mm ²	Copper	
flexible wire	Min.	2	0.75mm ²	Copper	
flexible wire	Max.	2	2.5mm ²	Copper	
flexible wire	Max.	2	AWG 14	Copper	
Single-core or stranded wire	Max.	2	AWG 12	Copper	
Single-core or stranded wire	Max.	2	2.5mm ²	Copper	
flexible wire with ferrule according to DIN 46228	Max.	2	2.5mm ²	Copper	
flexible wire with ferrule according to DIN 46228	Min.	1	0.5mm ²	Copper	
flexible wire with ferrule according to DIN 46228	Min.	2	0.5mm ²	Copper	

Approbations	
Specification	Marking

EAC



CE marking



Lloyd's Register EMEA



IEC 60947-3; EN 60947-3; VDE 0660 Teil107

**IEC 60947-3
EN 60947-3**

UL 60947-4-1; CSA C22.2 No. 60947-4-1



Approbations	Marking
--------------	---------

Specification	Marking
CSA C.22.2 No.14	
GB/T14048.3	 GB/T14048.3
Russian Maritime Register of Shipping	

Power loss per pole	Power (W)
---------------------	-----------

0,90

Conditions during transport and storing		
Minimum temperature (°C)	Maximum temperature (°C)	additional requirements

-40	85	In case of temperatures below -5°C no shock load permissible
-----	----	--

Shock / Vibration	
Type of oscillation	Values

Resistance to vibration	Min. 4g, 2-100Hz, 1,6mm
Resistance to shock	Min. 5g, 6ms

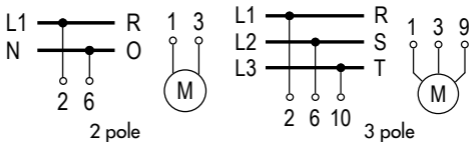
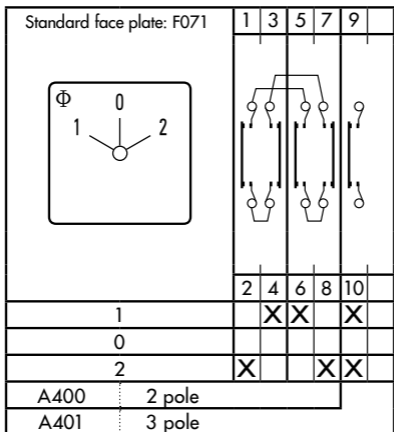
General Information	
Text	

- DC switching capacity applies to ON/OFF switches.
- Do not lubricate or treat contacts.
- Switches may only be mounted, connected and set into operation by qualified persons according to the accepted rules of technology.
- Use copper wire only. Do not coat the wire end with tin.
- Terminals with factory fitted jumper links are tightened during production. Take care during installation to ensure factory fitted links are not lost by undoing both sides of linked terminals. After wiring, all terminal screws must be tightened to recommended torque specifications.
- After installation of the switches the spacings between the terminals must be sufficient to fulfill the requirement of the applicable standards.

Operating temperature		
Min. Temperature [°C]	Max. Temperature [°C]	

-25	60	
-----	----	--

Motor Switches

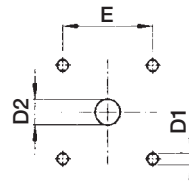
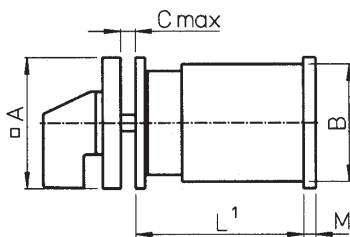


A400, A401 Motor Reversing Switches

With spring return to „OFF“ see page 37

Dimensions mm

Rotary Cam Switches - Panel Mounting



E Panel Mounting Size 0 - Size 3

	CG4	CAD's CA10	CA20	CA25	CA63 CA50 CA40 C26	C32	C42	C80	C200-4 C125	C315 L400
A	30	48	48	48	64	64	64	88	88	130
B	28	43	45	46	45/58	60	66	84	88	126
C	4	4	4	4	4	4	4	5,5	5,5	7
D1	3,2	5	5	5	5	5	5	6	6	7
D2	8	8	8	10	10	10	10	13	13	16
E	-	36	36	36	48	48	48	68	68	104
M	-	4,5	4,5	5,5	6,5	7,5	7,5	9,4	9,4	11,9

Length L

Stages	CG4	CAD's CA10	CA20	CA25	CA63 CA50 CA40 C26	C32	C42	C80	C200-4 C125	C315 L-switches Size S3
1	38,5	31,7	35,9	37,2	41	45,8	49,8	61,5	67,5	78,6
2	50	41,2	48,6	51,2	53,7	63,3	71,3	88	100	117,2
3	62,5	50,7	61,3	65,2	66,4	80,8	92,8	114,5	132,5	155,8
4	74,5	60,2	74	79,2	79,1	98,3	114,3	141	165	194,4
5	86,5	69,7	86,7	93,2	91,8	115,8	135,8	167,5	197,5	233
6	94,5	79,2	99,4	107,2	104,5	133,3	157,3	194	230	271,6
7	110,5	88,7	112,1	121,2	117,2	150,8	178,8	220,5	262,5	310,2
8	122,5	98,2	124,8	135,2	129,9	168,3	200,3	247	295	348,8
9	-	107,7	137,5	149,2	142,6	185,8	221,8	273,5	327,5	387,4
10	-	117,2	150,2	163,2	155,3	203,3	243,3	300	360	426
11	-	126,7	162,9	177,2	168	220,8	264,8	326,5	392,5	464,6
12	-	136,2	175,6	191,2		238,3	286,3	353	425	503,2