

1) Ultrasonic transducer, 2) Display and control panel



Basic features

| | |
|----------------------------|---|
| Application | Distance measurement |
| Approval/Conformity | cULus LISTED CE EAC WEEE UKCA |
| Operating mode | Analog measurement (output curve) |
| Series | Q62K1 |

Electrical connection

| | |
|------------------------------------|-------------------|
| Connection | M12x1-Male, 5-pin |
| Polarity reversal protected | yes |
| Short-circuit protection | yes |

Electrical data

| | |
|---|---------------------------|
| Current draw max. | 60 mA |
| Load resistance RL min. (Analog V) | 100 kOhm at UB > 15 V |
| Operating voltage Ub | 9...30 VDC |
| Rated operating voltage Ue DC | 24 V |
| Synchronization | internal, max. 10 sensors |
| Ultrasonic Frequency | 80 kHz |

Environmental conditions

| | |
|----------------------------|-------------|
| Ambient temperature | -25...70 °C |
| IP rating | IP67 |
| Storage temperature | -40...85 °C |

Functional safety

| | |
|---------------------|-------|
| MTTF (40 °C) | 389 a |
|---------------------|-------|

Ultrasonic Sensors
BUS Q62K1-XC-60/600-S92K
Order Code: BUS006K



Interface

| | |
|------------------------------|---|
| Analog output | Analog, voltage/Analog, current 0...10 V/4...20 mA |
| Output characteristic | linear rising/falling |

Material

| | |
|---------------------------------|---------------------------|
| Housing material | PBT |
| Material sensing surface | PU foam/Epoxy resin/Glass |

Mechanical data

| | |
|----------------------|---------------------------------|
| Dimension | 62.2 x 62.2 x 32.7 mm |
| Mounting part | 4-hole screw mount Screws M8 |

Range/Distance

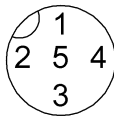
| | |
|------------------------------------|---------------|
| Range | 600...8000 mm |
| Rated operating distance Sn | 6000 mm |
| Repeat accuracy | ± 0.15 %FS |
| Resolution | ≤ 0.180 mm |

Remarks

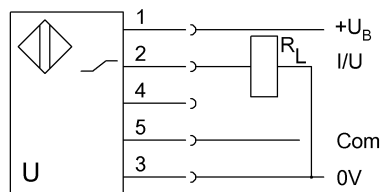
The sensor is functional again after the overload has been eliminated.
 Reference object for Sn: tube ø27mm. Max. range refers to the aligned plate.
 Do not press key using a pointed tool.
 Order accessories separately.
 For additional information, refer to user's guide.
 For more information about MTTF and B10d see MTTF / B10d Certificate

Indication of the MTTF- / B10d value does not represent a binding composition and/or life expectancy assurance; these are simply experiential values with no warranty implications. These declared values also do not extend the expiration period for defect claims or affect it in any way.

Connector Drawings



Wiring Diagrams



Technical Drawings

