

1) Ultrasonic transducer axis, 2) Exit direction 90° connector, 3) Display and control panel



Basic features

Application	Distance measurement Object detection
Approval/Conformity	cULus LISTED CE EAC WEEE UKCA
Operating mode	Retro-reflector Refl.light scanner (window) Reflectionlight scanner (switching point) Analog measurement (output curve)
Series	M30E1

Display/Operation

Adjuster	Key (2x)
Setting	Synchronous/Multiplex mode Segment displ. bright/dark/off Filter strength (10 levels) Response delay 0 to 20 s Foreground suppression range Multiplex sensor address Sensor calibration Temperature comp. on/off Output curve rising/falling Analog output U/I/Auto Segment display mode Synchronization on/off Multiplex speed Measured value filter Hysteresis Factory setting (Reset) Key disable on/off Normally open/Normally closed Switching distance, 2 values Operating mode Detection range (3 levels) Teach-in mode display/button Output curve window

Electrical connection

Connection	M12x1-Male, 5-pin
Polarity reversal protected	yes
Short-circuit protection	yes

Ultrasonic Sensors
BUS M30E1-PPC-60/600-S92K
Order Code: **BUS003Y**

BALLUFF

Electrical data

Current draw max.	80 mA
Hysteresis H max.	100 mm
Input function	Synchronization signal
Load resistance RL max. (Analog I)	500 Ohm at UB > 20 V 100 Ohm at UB < 20 V
Load resistance RL min. (Analog V)	100 kOhm at UB > 15 V
Operating voltage Ub	9...30 VDC
Output current max.	200 mA
Rated operating voltage Ue DC	24 V
Switching frequency	3 Hz
Synchronization	internal, max. 10 sensors
Ultrasonic Frequency	80 kHz

Environmental conditions

Ambient temperature	-25...70 °C
IP rating	IP67
Storage temperature	-40...85 °C

Functional safety

MTTF (40 °C)	1483 a
--------------	--------

Remarks

The sensor is functional again after the overload has been eliminated.
Reference object for Sn: tube \varnothing 27mm. Max. range refers to the aligned plate.
Do not press key using a pointed tool.
Order accessories separately.
For additional information, refer to user's guide.
For more information about MTTF and B10d see MTTF / B10d Certificate

Indication of the MTTF- / B10d value does not represent a binding composition and/or life expectancy assurance; these are simply exponential values with no warranty implications. These declared values also do not extend the expiration period for defect claims or affect it in any way.

Interface

Analog output	Analog, voltage/Analog, current 0...10 V/4...20 mA
Output characteristic	linear rising/falling
Switching output	PNP normally open/normally closed (NO/NC)

Material

Housing material	Stainless steel PBT, TPU
Material sensing surface	PU foam/Epoxy resin/Glass

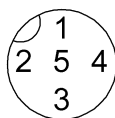
Mechanical data

Dimension	\varnothing 65 x 116.2 mm
Mounting part	Nut M30x1.5

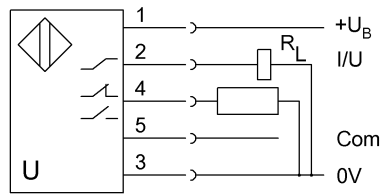
Range/Distance

Range	600...8000 mm
Rated operating distance Sn	6000 mm
Repeat accuracy	\pm 0.15 %FS
Resolution	\leq 0.180 mm

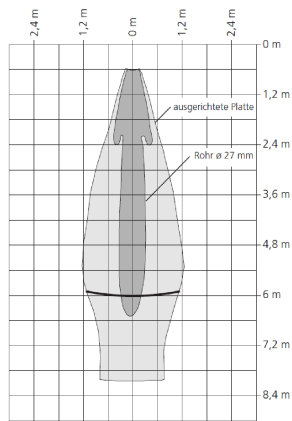
Connector Drawings



Wiring Diagrams



Technical Drawings



Help Views

