

2iB SC10 PUMP CONTROLLER

RETROFIT GUIDE FOR REPLACING
SISTEC PC-1 PUMP CYCLING CONTROLLER

THE RETROFIT PMI-R-SC10 KIT INCLUDES:

- 1 x PMI-R-SC10
Pump Controller SC10 24VAC/DC
- 1 x PMI-R-CCT40-200
Current Transformer, 10/20/50
A Input, 4-20 mA Output, Solid
Core
- 1 x HW1B-MIF10-B
Momentary Pushbutton (for
Set button)
- 1 x HW9Z-KL1
Plastic Hinged Pad-lockable
Cover
- 1 x Traffolyte Label "Set"

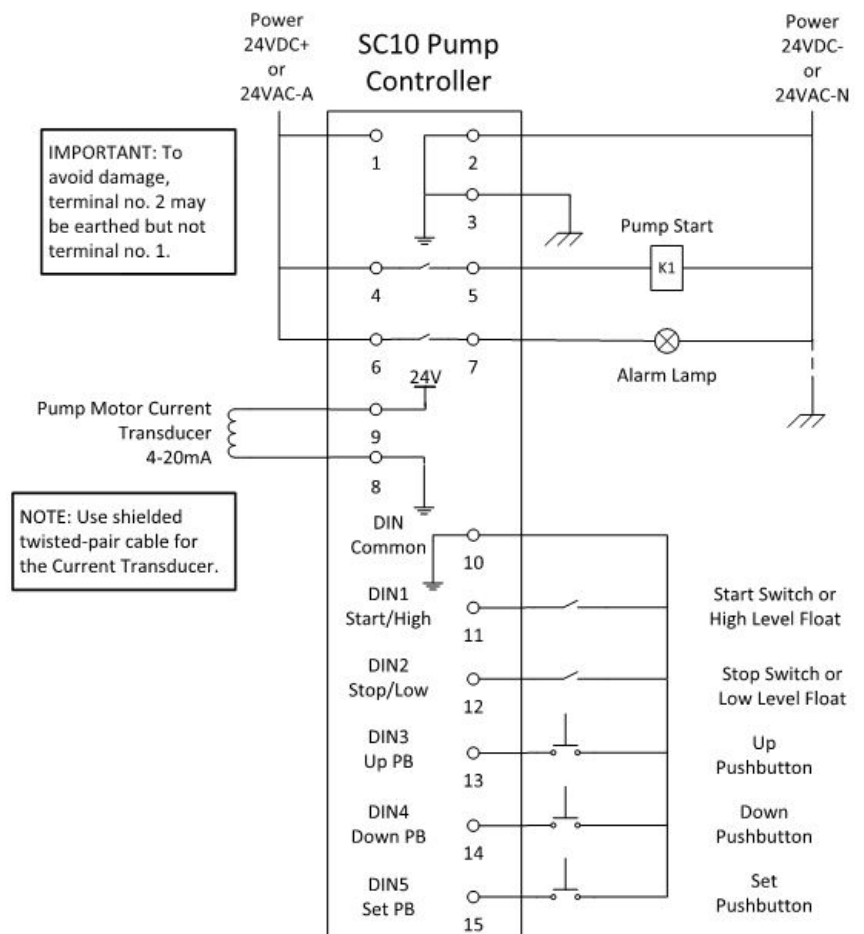
DIMENSIONS

2iB SC10

W: 106mm H: 91mm D: 65mm

Sistec PC1

W: 100mm H: 70mm D: 112mm



GET IN TOUCH

1300 881 876

sales@pacificautomation.com.au

www.pacificautomation.com.au

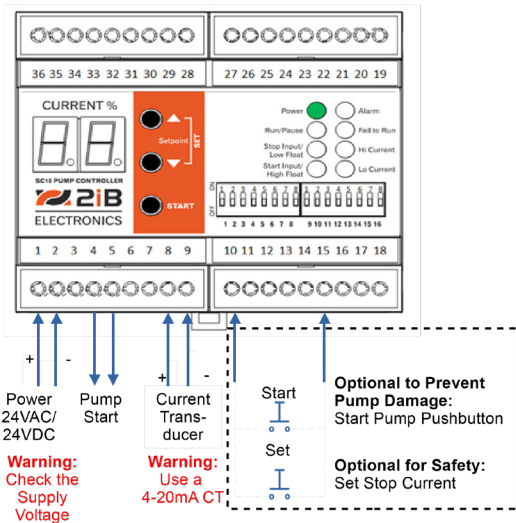


CRITICAL INFORMATION

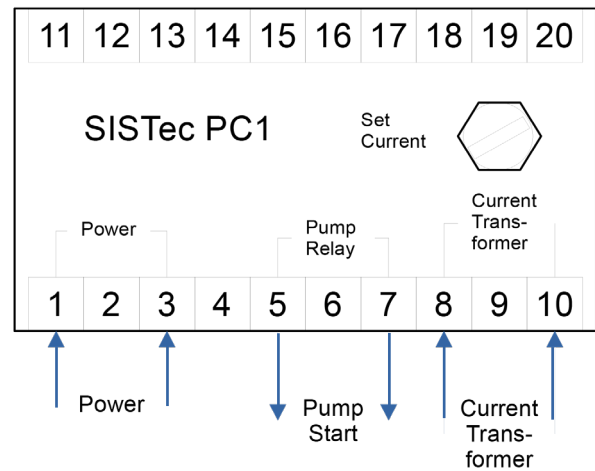
	2IB SC10	SISTEC PC1 24	NOTES
POWER SUPPLY	24 VAC/VDC	24 VAC/VDC or 110/240VAC	Beware of the voltage difference
CURRENT TRANSFORMER	Uses a CT with a 4-20mA output	Uses a CT with a 1A secondary	You will need to replace the CT
TERMINALS			Beware: Terminal Numbers are all different

CONNECTIONS

2iB SC10



Sistec PC1



2iB SC10

Turns/scaling for CT

Jumpers on CT or DIP switches 1,2 on controller only requires a single passthrough of the CT.

Setting the Stop Current Setpoint

Press the Set button to automatically lock in the stop current when the pump is snoring. Fine tune using the Up / Down buttons if required. The Set, Up and Down buttons on SC10 can be connected using momentary pushbuttons on the door of the starter for safer operation.

Pump Cycle Time

Set using DIP switches 3,4,5. No wiring required. Smart Adaptive Pause Control algorithm which matches the pump cycle time to the inflow.

SISTEC PC1

Requires multiple turns dependant on the size of the pump

Use the Pot / Knob on the unit

Set by wiring to terminals 17 to 20 (maximum rest time 20 minutes)

GET IN TOUCH

1300 881 876

sales@pacificautomation.com.au

www.pacificautomation.com.au

