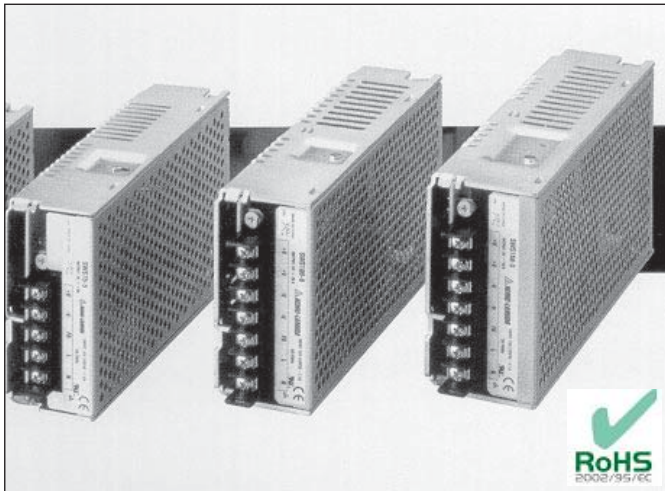


# SWS SERIES

## AC/DC Single Output: 50 - 150 Watts



### Features

- Universal input 85~264 VAC
- Optimum solution in cost and quality
- Power levels of 50, 75, 100 and 150 watts
- Harmonics to EN61000-3-2, Power Factor 0.95/0.99
- EMI/RFI: EN55022-B
- EN60950 safety standard
- CE marked
- Compact size
- LED indicators for power on
- Fully regulated outputs
- Zero load operation
- Short circuit protection
- Overvoltage protection
- Convection cooled

### Specifications

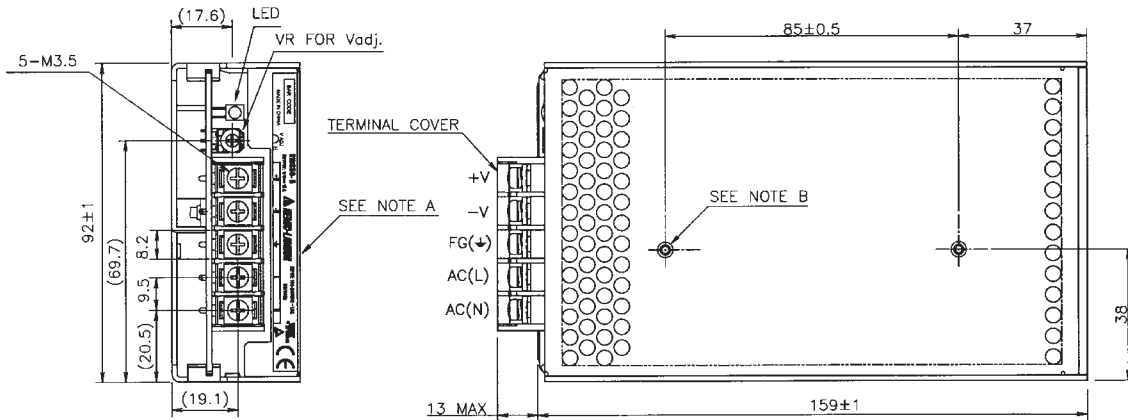
<b>INPUT :</b>	85~264 VAC 120~370 VDC
<b>FREQUENCY:</b>	47~63Hz
<b>OUTPUT VOLTAGE:</b>	Refer to table
<b>INDICATOR:</b>	Power ON LED
<b>OUTPUT V RANGE:</b>	3.3V (2.97~3.63), 5V (4.5~5.5), 12V (10.8~13.2), 15V (13.5~16.5) 18V (16.2~19.8) 24V (21.6~26.4)
<b>OUTPUT POWER:</b>	50~150 watts
<b>EFFICIENCY:</b>	Model dependent typically 75~80%
<b>INPUT CURRENT:</b> (at 230 VAC)	Model dependent 0.6A~0.9A (50-150W)
<b>INRUSH CURRENT:</b>	40A at 230 VAC cold start
<b>INPUT HARMONICS:</b>	EN61000-3-2
<b>RIPPLE &amp; NOISE:</b>	80~150mV
<b>LOAD REGULATION:</b>	±0.8%
<b>OVERCURRENT PROTECTION:</b>	Current limiting with auto recovery set at approximately 110% of rating
<b>OVERVOLTAGE PROTECT:</b>	OVP circuit will shutdown. Recycle AC supply to reset after 30 seconds
<b>HOLD-UP TIME:</b>	Typically 160ms at 230 VAC
<b>LEAKAGE CURRENT:</b>	0.6mA at 230 VAC
<b>PARALLEL OPERATION:</b>	NO
<b>OPERATING TEMP:</b>	-10°C to +60°C, with derating above 40°C
<b>HUMIDITY:</b>	30~90% RH
<b>COOLING:</b>	Convection cooled
<b>ISOLATION VOLTAGE:</b>	Input-Output: 3000 VAC
<b>SAFETY:</b>	UL1950, EN60950, EN50178
<b>EMI:</b>	EN55022 level B
<b>IMMUNITY:</b>	EN61000-4-2, -3, -4, -5, -6, -8, -11
<b>DIMENSIONS &amp; WEIGHT:</b> (H x W x L)	50W: 37 x 92 x 172mm      400g 75W: 43 x 94 x 183mm      480g 100W: 45 x 96 x 201mm      600g 150W: 51 x 99 x 211mm      750g

MODEL	Output		Power W
	V	A	
SWS50 - 3	3.3V	10A	33W
SWS50 - 5	5V	10A	50W
SWS50 - 12	12V	4.3A	50W
SWS50 - 15	15V	3.5A	50W
SWS50 - 18	18V	2.8A	50W
SWS50 - 24	24V	2.1A	50W
SWS75 - 3	3.3V	15A	50W
SWS75 - 5	5V	15A	75W
SWS75 - 12	12V	6.3A	75W
SWS75 - 15	15V	5.0A	75W
SWS75 - 24	24V	3.2A	75W
SWS100-3	3.3V	20A	66W
SWS100 - 5	5V	20A	100W
SWS100 - 12	12V	8.5A	100W
SWS100 - 15	15V	6.7A	100W
SWS100 - 24	24V	4.3A	100W
SWS150 - 3	3.3V	30A	100W
SWS150 - 5	5V	30A	150W
SWS150 - 12	12V	12.5A	150W
SWS150 - 15	15V	10A	150W
SWS150 - 18	18V	8.4A	150W
SWS150 - 24	24V	6.3A	150W

# SWS SERIES

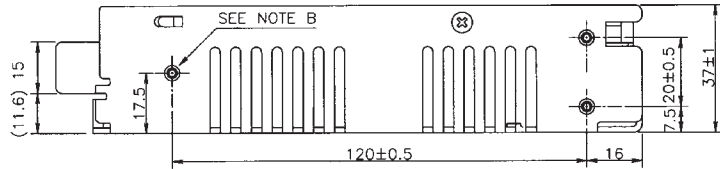
## AC/DC Single Output: 50 - 150 Watts

### SWS50

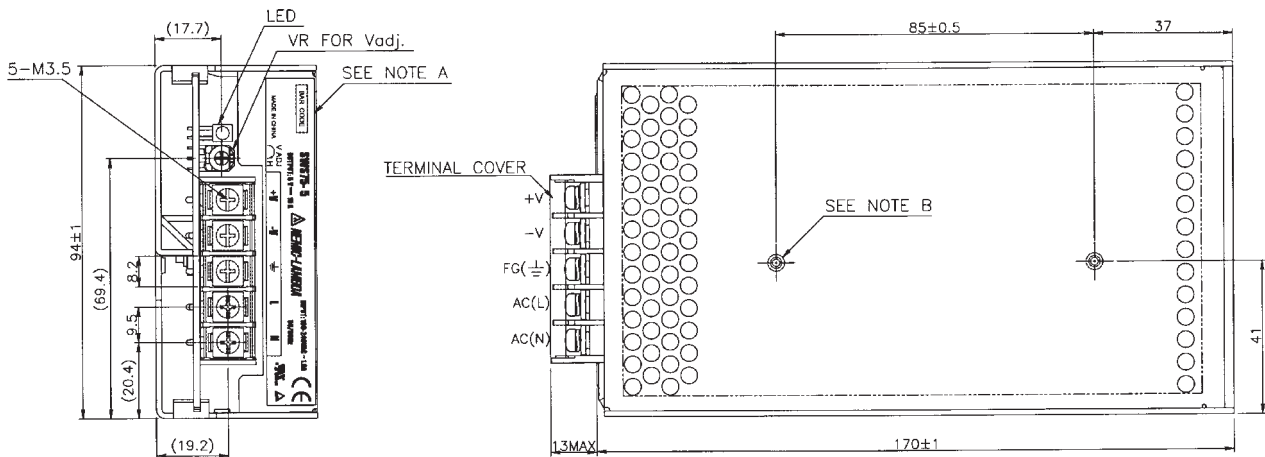


#### NOTES

- A: MODEL NAME, INPUT VOLTAGE RANGE, NOMINAL OUTPUT VOLTAGE, MAXIMUM OUTPUT CURRENT AND COUNTRY OF MANUFACTURE ARE SHOWN HERE IN ACCORDANCE WITH THE SPECIFICATIONS.
- B: M3 EMBOSSED, TAPPED AND COUNTERSUNK HOLES (5) FOR CUSTOMER CHASSIS MOUNTING. SCREWS MUST NOT PROTRUDE INTO POWER SUPPLY BY MORE THAN 6m/m.

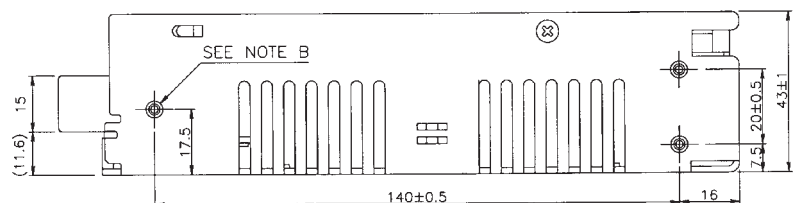


### SWS75



#### NOTES

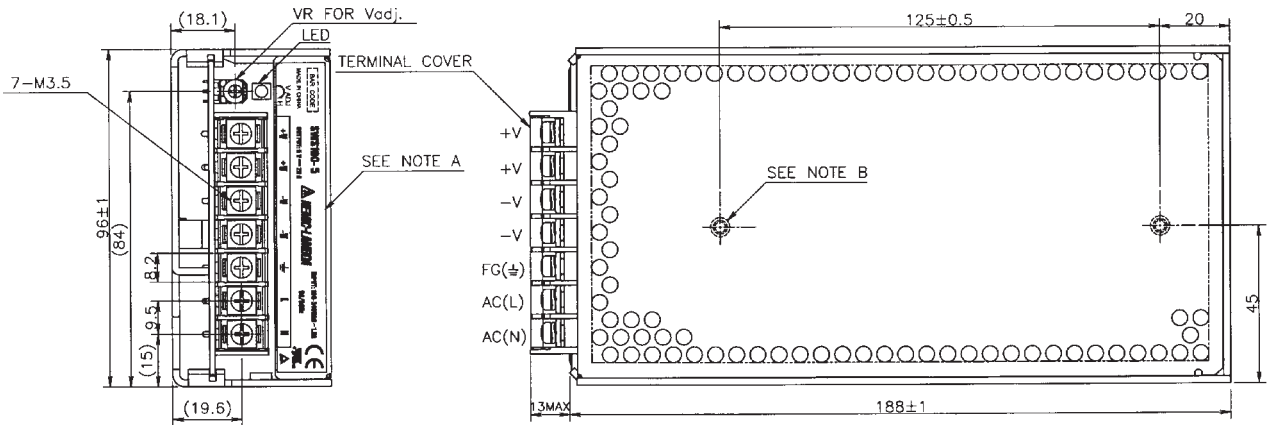
- A: MODEL NAME, INPUT VOLTAGE RANGE, NOMINAL OUTPUT VOLTAGE, MAXIMUM OUTPUT CURRENT AND COUNTRY OF MANUFACTURE ARE SHOWN HERE IN ACCORDANCE WITH THE SPECIFICATIONS.
- B: M3 EMBOSSED, TAPPED AND COUNTERSUNK HOLES (5) FOR CUSTOMER CHASSIS MOUNTING. SCREWS MUST NOT PROTRUDE INTO POWER SUPPLY BY MORE THAN 6m/m.



# SWS SERIES

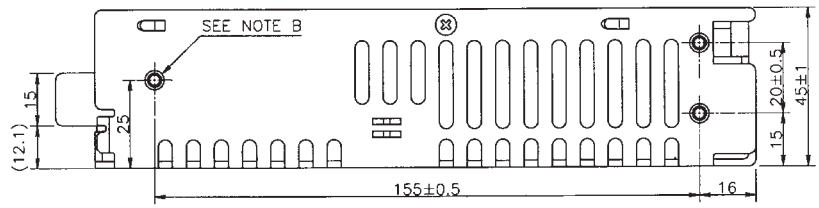
## AC/DC Single Output: 50 - 150 Watts

### SWS100

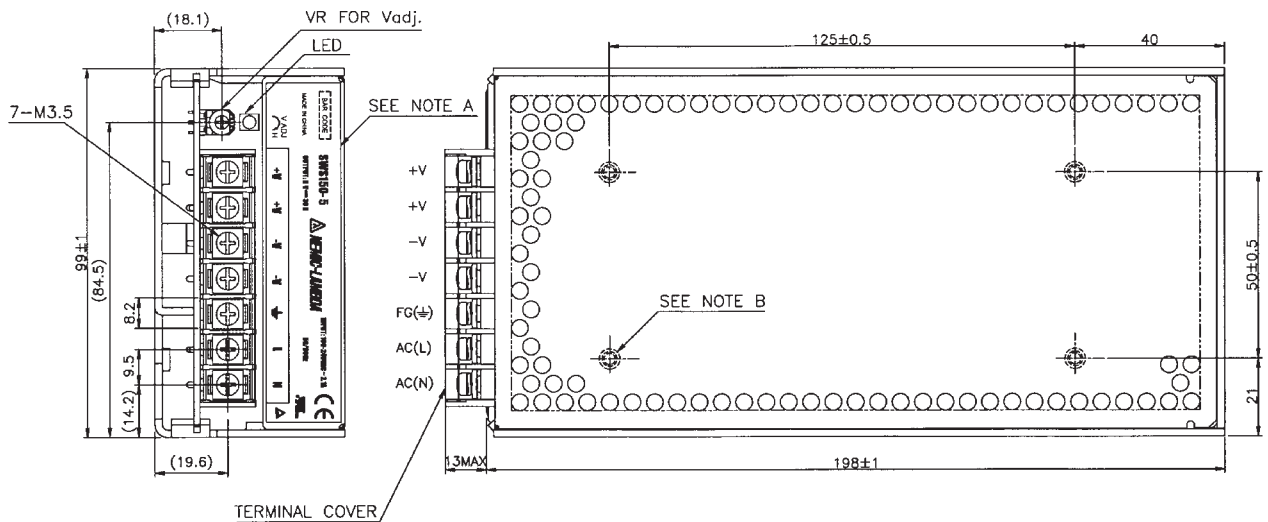


#### NOTES

- A: MODEL NAME, INPUT VOLTAGE RANGE, NOMINAL OUTPUT VOLTAGE, MAXIMUM OUTPUT CURRENT AND COUNTRY OF MANUFACTURE ARE SHOWN HERE IN ACCORDANCE WITH THE SPECIFICATIONS.
- B: M4 EMBOSSED, TAPPED AND COUNTERSUNK HOLES (5) FOR CUSTOMER CHASSIS MOUNTING. SCREWS MUST NOT PROTRUDE INTO POWER SUPPLY BY MORE THAN 6m/m.



### SWS150



#### NOTES

- A: MODEL NAME, INPUT VOLTAGE RANGE, NOMINAL OUTPUT VOLTAGE, MAXIMUM OUTPUT CURRENT AND COUNTRY OF MANUFACTURE ARE SHOWN HERE IN ACCORDANCE WITH THE SPECIFICATIONS.
- B: M4 EMBOSSED, TAPPED AND COUNTERSUNK HOLES (7) FOR CUSTOMER CHASSIS MOUNTING. SCREWS MUST NOT PROTRUDE INTO POWER SUPPLY BY MORE THAN 6m/m.

